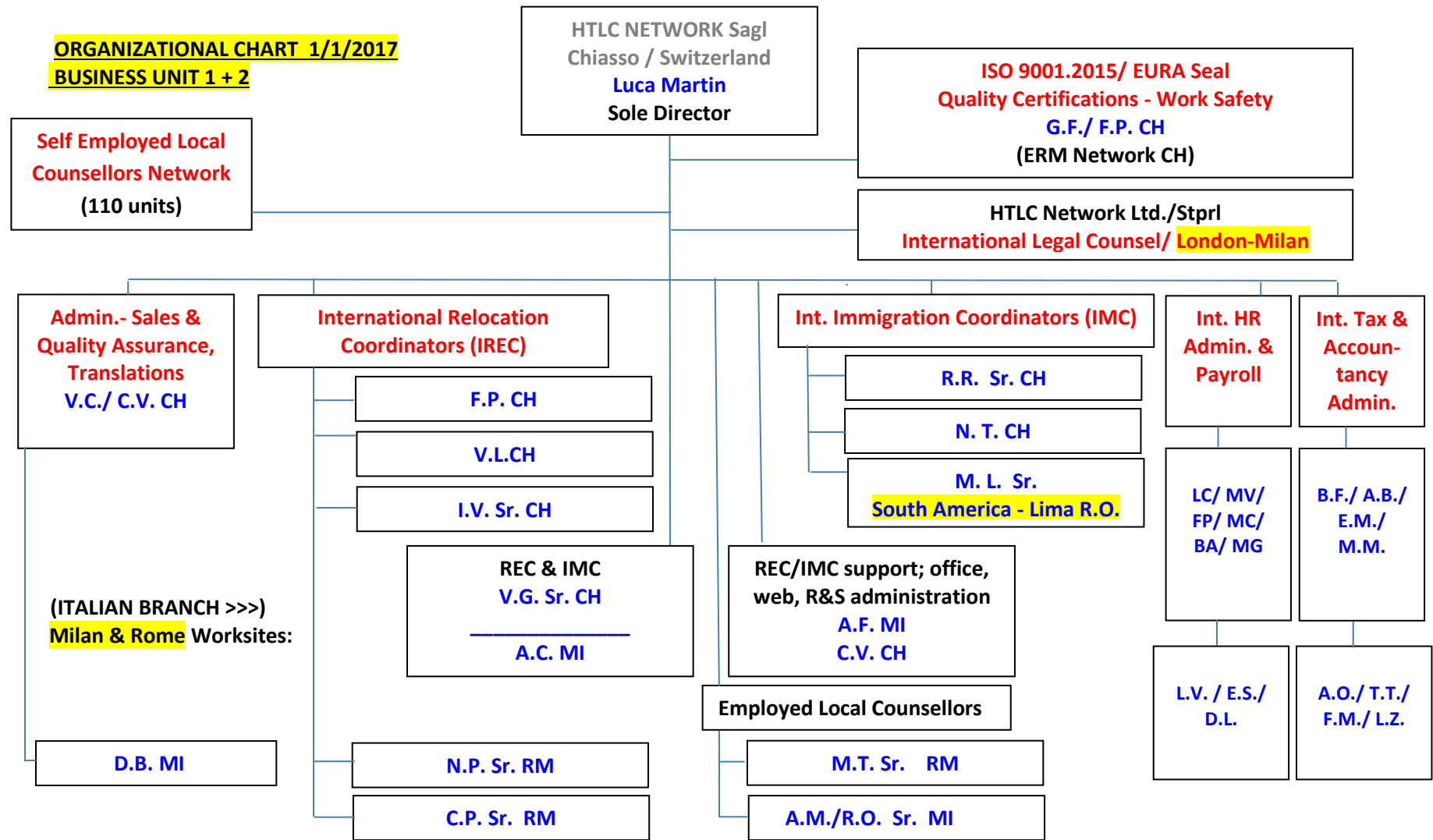


ORGANIZATIONAL CHART 1/1/2017
BUSINESS UNIT 1 + 2



(GERMAN BRANCH >>>) 2 active consultants teams + recruiting in progress
Frankfurt/Walluf worksite:

IT staff in separate group companies (ITS/ AIBD - CH) : D.Z., M.M., N.M., F.B., P.G.
 Consultants Network : 20 units in Italy + 110 units EMEA

Total employed : 41 heads